

This file has been cleaned of potential threats.

If you confirm that the file is coming from a trusted source, you can send the following SHA-256 hash value to your admin for the original file.

4c7dd7b4cf033cfd6ded7335fa8a7e4a52305b037e42efe0eec5bc86d92365ea

To view the reconstructed contents, please SCROLL DOWN to next page.

Fashion Design Influenced By The Architecture Of Wat Phra Chetuphon Wimonmangkalam Ratchaworamahawihna

Tuenta Pornmuttawarong ¹ and Siratcha Samleethong ²

^{1,2}Faculty of fine and applied arts, Suan Sunandha Rajabhat University, Thailand

E-mail: ¹tuenta.po@ssru.ac.th, ²siracha.sa@ssru.ac.th

Abstract

This research aims to create contemporary fashion design inspired by the corner stupas of Wat Phra Chetuphon Wimonmangkalam Ratchaworamahawihna. The objective is to analyze architectural elements of the corner stupas and develop them into fashion design concepts. The research employs qualitative methodology, including field studies, document analysis, and design experimentation. The result is a collection of five women's wear designs that reflect the beauty of the stupas' tapered forms and repetitive tiered structures through layered silhouettes, overlapping elements, and pleating techniques that capture the grandeur of Thai architecture.

Keywords: Fashion Design, Thai Architecture, Stupa, Wat Phra Chetuphon, Contemporary Fashion

1. Introduction

Wat Phra Chetuphon Wimonmangkalam Rajwaramahaviharn, commonly known as Wat Pho, is a first-class royal monastery and the temple of King Rama I of the Chakri Dynasty. Established during the Ayutthaya period, it underwent major renovations during the reigns of King Rama I and King Rama III, becoming a significant repository of national artistic and cultural heritage. The temple's corner stupas, in particular, showcase distinctive architectural characteristics that reflect the design wisdom of ancient Thai craftsmen (Mayusoh, 2022). These corner stupas are distinguished by their tapered forms and repetitive tiered structures, demonstrating exceptional design and construction expertise. (Wongsawan, 2022)

Figure 1: Architecture of the Chedi of Wat Phra Chetuphon



Source:Tuenta Pornmuttawarong

In contemporary times, there is growing interest in applying cultural heritage to modern design, particularly in the fashion industry, which constantly seeks new sources of inspiration.(Chanpen & Tangcharoen, 2021)(Pattanasiri, 2022) Interpreting and adapting the architectural elements of Wat Phra Chetuphon's corner stupas for fashion design presents an intriguing opportunity to create clothing that bridges contemporary style with cultural value. (Limsiri, 2021)

This research aims to study and analyze the architectural elements of the corner stupas, focusing on their form, proportions, and compositional arrangements, to develop concepts for contemporary fashion design. Through experimentation with fabric manipulation, layering, and construction techniques, the study seeks to translate the beauty of Thai architecture into fashion. This approach not only provides a pathway for creating distinctive and contemporary clothing but also promotes the preservation and dissemination of Thai cultural heritage in a new form.

1.1 Research Objective

1. To analyze the architectural elements of the corner pagodas at Wat Phra Chetuphon Vimolmangklaram.
2. To develop design concepts for contemporary fashion inspired by the analyzed architectural elements.

2. Body of paper

Research Methodology

The research titled "A Study of Contemporary Costume Design Inspired by Corner Pagodas of Wat Phra Chetuphon Vimolmangklararm" follows these research procedures:

1. Preliminary Study

- Collect documents, textbooks, and research related to the history and significance of Wat Phra Chetuphon Vimolmangklararm
- Study information about corner pagoda architecture, architectural elements, and historical significance
- Study theories and principles of contemporary costume design

2. Field Study

- Survey and record physical data of corner pagodas
- Photograph architectural element details
- Interview experts in architectural history and conservation

3. Data Analysis

- Analyze architectural elements, forms, proportions, and patterns
- Analyze the suitability of applying elements to design
- Synthesize contemporary costume design concepts

4. Design and Development

- Create design concepts and sketches
- Develop sketches and select appropriate designs
- Create custom prototypes

5. Evaluation

- Evaluate designs by experts
- Analyze and summarize evaluation results
- Prepare recommendations for further development

3. Result

The research on "A Study of Contemporary Costume Design Inspired by Corner Pagodas of Wat Phra Chetuphon Vimolmangklararm" yielded the following results:

1. Analysis of Corner Pagoda Architectural Elements

The study revealed significant architectural characteristics including:

- Distinctive dodecagon shape symbolizing stability and balance
- Three-tiered base showing refined construction techniques
- Intricate decorative patterns such as lotus petals, geometric patterns, and vine motifs
- Bell-shaped body and spire with proportions following Thai architectural principles

2. Design Concept Development

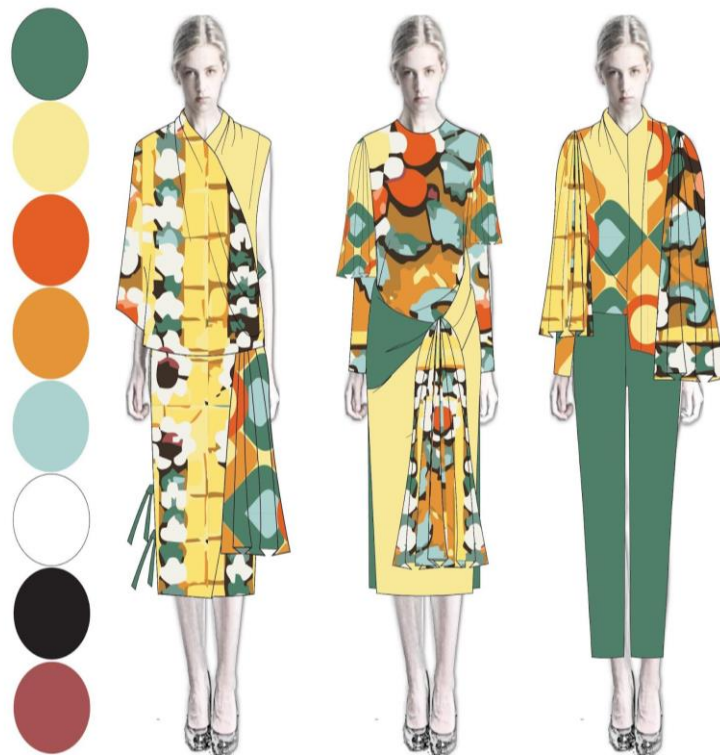
The researcher developed design concepts based on architectural elements:

- Application of dodecagon shapes in garment construction and pleating
- Arrangement of decorative patterns considering proportion and balance
- Color scheme combining traditional pagoda colors with contemporary palettes
- Layered clothing structures inspired by pagoda base tiers

3. Design Output

Three contemporary costume designs were created from developed design concepts based on architectural elements of Wat Phra Chetuphon Wimonmangkalam Ratchaworamahawihna.

Figure 2: Three contemporary costume designs were created



Source:Tuenta Pornmuttawarong

4. Expert Evaluation Results

Expert assessment of designs showed:

- Beauty and contemporariness: Excellent (4.75/5.00)
- Architectural inspiration representation: Good (4.25/5.00)
- Production feasibility: Good (4.00/5.00)
- Creativity and innovation: Excellent (4.50/5.00)

5. Recommendations

- Further development of construction techniques for commercial production
- Exploration of alternative contemporary materials
- Development of more diverse styles to reach broader consumer groups

4. Acknowledgment

This research is an extension of the study titled “Fashion Identity Design based on Buddhist philosophy of Wat Phra Chetuphon Wimonmangkalaram Ratchaworamahawihna.” The researcher would like to express gratitude to all related organizations for their contribution to the successful and efficient completion of this work.

References

- Mayusoh, C. (2022). A Study of Thai Architectural Elements for Fashion Design. *Journal of Fine Arts*, 15(2), 45-62.
- Wongsuwan, K. (2022). A study of Thai pagoda architectural styles for contemporary costume design. *Journal of Fine Arts, Srinakharinwirot University*, 26(2), 45-62.
- Chanpen, N., & Tangcharoen, W. (2021). Application of Thai architectural patterns in contemporary fashion design: A case study of Wat Phra Chetuphon Vimolmangklaram. *Journal of Fine Arts*, 12(1), 89-112.
- Sukumran, P. (2020). Development of costume design concepts from Thai architectural identity. *Art and Architecture Journal Naresuan University*, 11(2), 156-171.
- Pattanasiri, W. (2022). Contemporary costume design inspired by ancient temple architecture in Rattanakosin. *Journal of Institute of Culture and Arts*, 23(1), 78-95.
- Limsiri, A. (2021). Cultural heritage transmission through contemporary costume design: A study of architectural elements of Wat Phra Chetuphon. *KMUTT Research and Development Journal*, 44(2), 212-229.